



optiClient Attendant The PC Attendant Console for HiPath 3000

optiClient Attendant is the PC attendant console for the HiPath 3000 IP communication platform. It can operate with the models HiPath 3700/3750, HiPath 3500/3550 and HiPath 3300/3350. Up to six optiClient Attendants can be connected to these models.

All the functions of an attendant telephone are simulated on the graphical user interface on the PC monitor.

SIEMENS

Global network of innovation

The main functions of the optiClient Attendant are:

- User-friendly operation of an attendant telephone at the PC
- Optical busy display and direct dialing
- Electronic telephone directory

Optional:

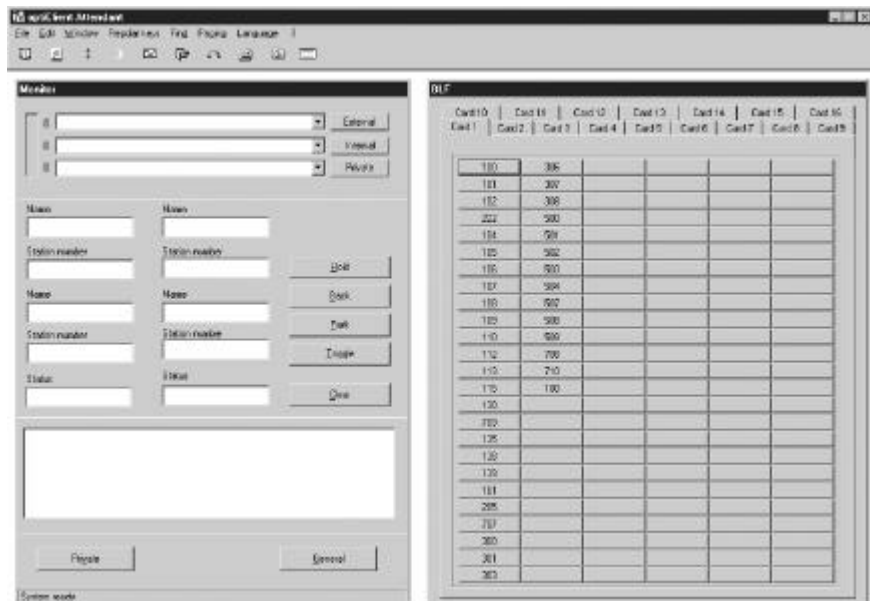
- Charge logging/evaluation of the communication system on the same PC

These functionalities are also available network-wide in connection with HiPath AllServe. The optiClient Attendant is supported by the operating systems Microsoft Windows® 98/ME/NT 4.0/2000. Parallel operation with other Microsoft Office applications is possible. This means the PC will be cost-effective even if call processing represents only part of the workstation's overall functions.

Description of the most important functions

Operating functionality on the PC monitor

The functionality of an attendant telephone is clearly presented on a graphical user interface on the PC monitor. Operations can be performed using either the PC keyboard or mouse buttons. The direct station selection fields can be matched to individual requirements.



optiClient Attendant user interface

Electronic telephone directory

On more than 30 fields the integrated electronic telephone directory offers extensive options for entering names, addresses with telephone and fax numbers, keywords, and other details. Selection is via an appropriate mask.

Users can create several mutually independent telephone directories. The data is stored in an access database (also as a network file) and can be imported, exported, and printed out.

Parallel operation with other Windows applications

Operation of standard office applications (Microsoft Windows Office97/2000) in parallel with optiClient Attendant is permitted. When there is a call, the PC attendant console is automatically called to the user interface and running programs move to the background.

Note: No guarantee can be given of unrestricted operation of applications running in parallel.

The WinAccount or TeleData Office application is offered for charge logging and evaluation.

Functional scope

- Display of waiting calls with type, name, and telephone number
- Number of waiting calls with graphical display
- Different colors for the waiting calls with a settable threshold value
- Acoustic signaling on the PC with volume adjustment; can be deactivated
- Call status display
- Speed extending of calls
- Speed dialing via direct station selection fields
- Individual configuration of the direct station selection fields with directory number or name
- Busy lamp fields for max. 16 network nodes
- Color display of the busy condition of internal users
- Call toggle, hold, park
- Number redial (last 10 destinations)
- Conference with up to 5 call participants
- Electronic telephone directory
- Inclusion of external telephone CD-ROMs
- Suppl. functions such as override, call-back, broadcast intercom calls
- Charge logging and interrogation for certain calls
- Night service
- Online help
- Menu-prompted installation
- User interface languages: German, English (USA/UK neutral), French, Italian, Spanish, Portuguese, Dutch, Finnish, Czech, Danish, Norwegian, Polish, Russian, Hungarian

Braille line

Connecting a Braille line

optiClient Attendant allows a Braille line to be connected for visually impaired persons. The status information of the optiClient Attendant is imaged on the Braille line to allow a visually impaired person to operate an attendant console.



Technical data

Permitted communication systems

- HiPath 3700/3750
HiPath 3500/3550
HiPath 3300/3350
- Hicom 150 H OfficePro/OfficeCom
- Hicom 150 E OfficePro/OfficeCom
- HiPath AllServe

Connection variants

- Via U_{PO/E} interface card in the PC
- Via optiset E control adapter on the optiset E
- Via USB interface at the optiPoint 500 telephone
- Via TCP/IP and network card
Note: optiClient 130 V2.0 is also necessary for connection.

PC requirements

- The PC must meet the requirements of the operating system employed
- Min. 50 MB free space on the hard disk
- Sound card
- Free V.24 interface if connected via optiset E control adapter
- USB1.1 interface for connection via optiPoint 500 telephones
- TCP/IP-compliant network card for IP connection
- Free V.24 interface for connecting a Braille line
- Monitor: VGA 1024 x 768 pixels

Other data

Operating systems

- Microsoft Windows 98 / ME / NT 4.0 / 2000
(Operation with U_{PO/E} interface card only under Windows 98/98)

Installation/administration

- Menu-prompted installation
- Online help

Scope of delivery

- CD-ROM with optiClient Attendant software and electronic documentation

Options

- U_{PO/E} interface card for PC with driver software
- optiset E control adapter
- Headset with receptacle
- optiClient Attendant 130 V2.0

Licensing

The program must be licensed for all connection variants, apart from the U_{PO/E} interface card.

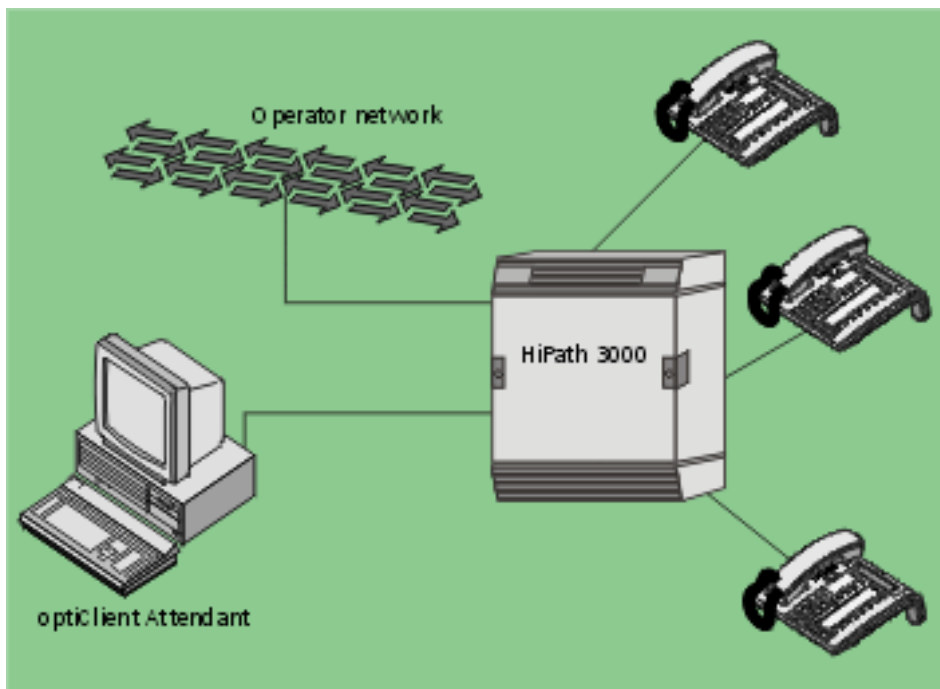
Our strengths - Your advantages

Siemens is known worldwide as a trailblazer in the advancement of information and communication technologies. No other company offers such a comprehensive and innovative product portfolio.

With the one-of-a-kind Siemens convergence architecture, HiPath, guide your customers to a secure and flexible migration into the world of innovative IP convergence solutions.

www.hipath.com

System configuration



© Siemens AG 2002 • Information and Communication Networks • Hofmannstr. 51 • D-81359 München

Reference No.: A31002-E1300-A300-2-7629

The information provided in this document contains merely general descriptions or characteristics of performance which in case of actual use do not always apply as described or which may change as a result of further development of the products. An obligation to provide the respective characteristics shall only exist if expressly agreed in the terms of contract. Availability and technical specifications are subject to change without notice. Printed in Federal Republic of Germany.